



F6

Floor Machine
擦地机

Operator and Parts Manual (EN)

操作和零件手册 (CN)



Model Part No.
型号零件号
1071157 – 220V / 50 Hz CN

9009679
Rev. 00 (06-2012)

INTRODUCTION

This manual is furnished with each new model. It provides necessary operation and maintenance instructions and replacement parts information.



Read this manual completely and understand the machine before operating or servicing it.

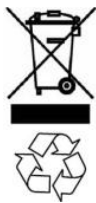
INTENDED USE

The F6 floor machine is intended for commercial use, for example in hotels, schools, hospitals, factories, shops, offices and rental businesses. It is designed to scrub floors in an indoor environment and is not constructed for any other use. Use only recommended pads and commercially available floor cleaners intended for machine application. Do not use flammable liquids with this machine.

GENERAL INFORMATION

This machine will provide excellent service. However, the best results will be obtained at minimum costs if:

- The machine is operated with reasonable care.
- The machine is maintained regularly - per the maintenance instructions provided.
- The machine is maintained with manufacturer supplied or equivalent parts.



Protect the Environment

Please dispose of packaging materials and used machine components in an environmentally safe way according to your local waste disposal regulations.

Always remember to recycle.

MACHINE DATA

Please fill out at time of installation for future reference.

Model No. -- _____

Serial No. -- _____

Installation Date -- _____

TABLE OF CONTENTS

IMPORTANT SAFETY INSTRUCTIONS	3
SAFETY LABEL	4
MACHINE COMPONENTS	5
MACHINE ASSEMBLY	5
MACHINE SETUP	5
MACHINE OPERATION	6
MACHINE MAINTENANCE	8
TRANSPORTING MACHINE	8
STORING MACHINE	8
TROUBLE SHOOTING	9
SPECIFICATIONS	9
PARTS LIST	18
RECOMMENDED SPARE PARTS	19
ELECTRICAL DIAGRAM	20


Tennant Cleaning Systems & Equipment Co., Ltd
Building 1, No. 3777 Caoying Road
Qingpu Shanghai, China 201712
phone: 86 21 6922 5333
fax: 86 21 69225151
www.tennantco.com.cn

Original Instructions. Copyright © 2012 Tennant Company.
 All rights reserved. Printed in China.
 Specifications and parts are subject to change without notice.

IMPORTANT SAFETY INSTRUCTIONS - SAVE THESE INSTRUCTIONS

All operators must read, understand and practice the following safety precautions.

The following precautions are used throughout this manual as indicated in their description:

 **WARNING:** To warn of hazards or unsafe practices which could result in severe personal injury or death.

FOR SAFETY: To identify actions which must be followed for safe operation of equipment.

The following information signals potentially dangerous conditions to the operator or equipment:

 **WARNING:** To Reduce the Risk of Explosion, Fire, Electric Shock or Injury:

- Do Not Use Flammable Liquids or Operate near flammable liquids, vapors or combustible dusts.

This machine is not equipped with an explosion proof motor. The electric motor will spark upon start up and during operation which could cause a flash fire or explosion if machine is used in an area where flammable vapors/liquids or combustible dusts are present.

- Do Not Operate With Damaged Power Cord. Do Not Modify Plug. Unplug Power Cord Before Cleaning or Servicing Machine.

If the supply cord is damaged or broken, it must be replaced by the manufacturer or its service agent or a similarly qualified person in order to avoid a hazard.

- Do Not Use Outdoors. Do Not Expose to Rain. Store Indoors.

FOR SAFETY:

1. Do not operate machine:

- Unless trained and authorized.
- Unless operator manual is read and understood.
- Unless mentally and physically capable of following machine instructions.
- Unless cord is properly grounded.
- Unless power voltage corresponds with voltage shown on machine's rating plate.
- If cord or plug is damaged.
- If not in proper operating condition.
- In outdoor areas. This machine is for indoor use only.
- In standing water.
- With the use of an extension cord.
- With brushes or accessories not supplied or approved by Tennant.

2. Before operating machine:

- Make sure all safety devices are in place and operate properly.
- Inspect cord regularly for signs of damage or aging.
- Remove loose objects on floor to prevent dangerous projectiles if struck by spinning pad.
- Follow safety guidelines concerning wet floors.
- Follow mixing and handling instructions on chemical containers.
- Wear non-slip shoes.

3. When operating machine:

- Use only as described in this manual
- Stay clear of spinning pad.
- Do not pull machine by plug or cord.
- Do not run machine over cord.
- Do not allow cord to come in contact with spinning brush.
- Do not pull cord around sharp edges or corners.
- Do not close doors on cord.
- Do not unplug by pulling on cord.
- Do not stretch cord.
- Do not handle plug with wet hands.
- Keep cord away from heated surfaces.
- Never activate the power when the handle is in the upright position.
- Do not release handles until pad comes to a complete stop.
- Go slow on inclines and slippery surfaces.
- Report machine damage or faulty operation immediately.
- Keep children and unauthorized persons away from machine.
- Do not allow to be used as a toy.
- Do not tilt machine back on rear wheels if optional weights are installed.
- Do not use more than two weights.

4. Before leaving machine:

- Turn off machine.
- Unplug cord from wall outlet.

5. When servicing machine:

- Unplug cord from wall outlet.
- Avoid moving parts. Do not wear loose clothing or jewelry.
- Use manufacturer supplied or approved replacement parts.
- All repairs must be performed by a qualified service person.
- Do not modify the machine from its original design.

6. When transporting machine:

- Unplug cord from wall outlet.
- Get assistance when lifting machine.
- Use tie-down straps to secure machine to truck or trailer.
- Remove optional weights from machine, if equipped.

SAFETY LABEL

The safety label appears on the machine in the location indicated. Replace label if it is missing or becomes damaged or illegible.



WARNING LABEL --
LOCATED ON BACK SIDE OF MACHINE HANDLE.



MACHINE COMPONENTS



1. Power On/Off Trigger Lever
2. Handle Height Adjustment Lever
3. Safety Lock Button
4. Circuit Breaker Reset Button
5. Power Cord Hook
6. 15m Power Cord
7. Motor
8. Transport Wheels
9. Scrub Head Base
10. Bumper
11. Weight Mounts

MACHINE ASSEMBLY

ATTACHING HANDLE (Figure 1)

1. Insert the handle into the machine and place the spacers on each side of the handle.
2. Insert the pivot shaft with the knurled end (rough part of the shaft) on the outside. Use a mallet to slide the pivot shaft through the spacers and handle. Hit the pivot shaft until it is flush with the motor base plate.
3. Unscrew the wing nut on the handle adjustment lever and make sure the cam washer with slot is aligned. Insert the handle adjustment lever assembly into the slotted brace. Slide the handle adjustment lever assembly through the handle clamp and brace. Place washer on the threaded stud and tighten the wing nut.

4. Wrap the cord around the handle base. Plug the cord and slide the protective cover in place

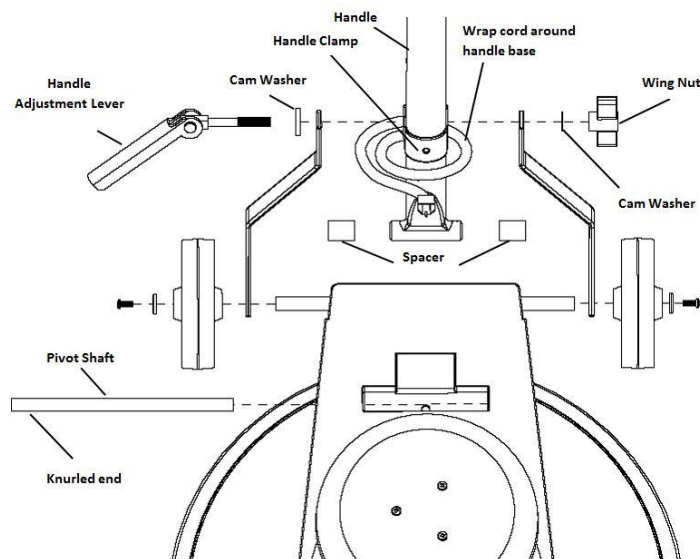


FIG. 1

MACHINE SETUP

INSTALLING PAD DRIVER / PAD / BRUSH

FOR SAFETY: Before servicing machine, unplug cord from wall outlet.

1. With the handle in the upright position carefully tilt the machine backwards and rest the handle on the floor.

NOTE: Consult your authorized distributor for pad and brush recommendations. Use only manufacturer supplied or approved pad drivers and brushes.

2. Position the pad driver/brush on the drive motor hub and turn it counter-clockwise to engage (Figure 2).



FIG. 2

FOR SAFETY: Do not tilt back machine on rear wheels if optional weights are installed.

- If using a pad, position the pad onto the pad driver (Figure 3).



FIG. 3

- Return machine to the upright position.

INSTALLING WEIGHTS - OPTION

To increase pad pressure, Tennant offers an 11.7 kg U-shaped weight that attaches to the machine as described below.

The weights are intended for hard floor surfaces such as marble, stone, terrazzo and concrete. Weights are not intended for carpet cleaning.

Depending on the required amount of pad pressure needed, up to two weights can be used.

FOR SAFETY: When operating machine do not use more than two weights.

- Install each weight one at a time by lining up the weights to the mounting point. (Figure 4)
- Ensure the weight mounting points interlock. (Figure 4a)



FIG. 4

MACHINE OPERATION

FOR SAFETY: Do not operate machine unless operator manual is read and understood.

WARNING: Do not use flammable liquids or operate near flammable liquids, vapors or combustible dusts.

OPERATING MACHINE

1. Plug the power cord into a grounded wall outlet.
FOR SAFETY: Do not operate machine with damaged cord or plug. Do not operate machine with the use of an extension cord.

2. To adjust the handle, first lift the handle height adjustment lever upwards with your foot (Figure 5). Then adjust the handle to a comfortable operating position (Figure 6). Lock the handle by stepping on the adjustment level down tightly (Figure 7).



FIG. 5



FIG. 6



FIG. 7

3. Before starting the machine, hold the handle so the machine base is parallel to floor. This will reduce the abrupt jolt when starting the machine.

NOTE: For first time users, practice with a polishing pad which is less aggressive.

FOR SAFETY: Do not tilt back machine on rear wheels if optional weights are installed.

4. To begin scrubbing, hold the handles firmly, depress the safety lock button and pull and hold the trigger lever(s) (Figure 8). Release the safety lock button once machine starts.

ATTENTION: Use caution when starting out, the machine will jolt when the trigger levers are pulled.

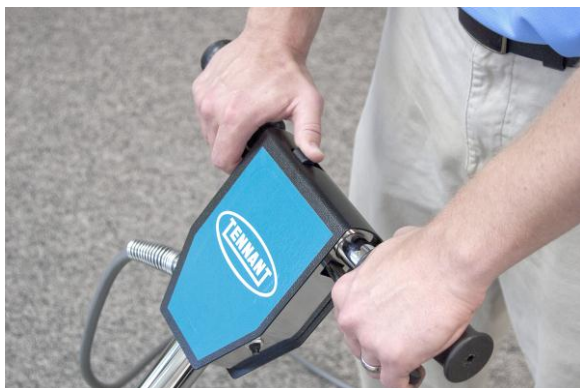


FIG. 8

5. To move the machine left (Figure 9), slightly lower the handle. To move right (Figure 10), slightly raise the handle. Operate the machine with a side to side motion.



FIG. 9



FIG.10



NOTE: When pad becomes soiled, remove pad and turn over to expose clean side. Remove and wash pad after both sides become soiled.

6. To stop machine, release the trigger levers until machine comes to a complete stop. The safety lock button will automatically engage.

FOR SAFETY: When using machine, do not release handles until pad comes to a complete stop.

NOTE: The machine's circuit breaker may trip under conditions of excessive overload. Change to a less aggressive pad/brush and periodically check pad for soil build-up. To reset circuit breaker switch, wait 15 seconds and press the reset button located on the handle.

7. Do not operate the machine in the same spot for a long period of time. Floor damage may result.

8. To maneuver over thresholds and floor grates, stop the machine and tilt it back on the transport wheels.

9. When machine is not in use, do not leave machine standing on the pad/brush. Pad/brush damage may result.

10. When done scrubbing perform the machine maintenance procedures.

OPERATING THE OPTIONAL SOLUTION TANK

1. Fill the solution tank with a recommended solution (Figure 11).

⚠ WARNING: Do Not Use Flammable Liquids.

FOR SAFETY: Before operating machine, follow mixing and handling instructions on chemical containers.



FIG. 11

2. Lower handle to working position. Twist the solution control knob to disperse solution to the brush (Figure 12).



FIG. 12

CLEANING CARPETS

Shampoo carpet brush required. Do not use a brush that is intended for hard floors; personal injury and carpet damage may result. Consult your distributor or dealer for pad recommendations.

Optional machine weights are not intended for carpet cleaning.

Before operating the machine on carpet, the carpet must be presprayed with an approved cleaning solution (Figure 13). The solution will also act as a lubricant to allow the shampoo brush to spin with little resistance.

ATTENTION: Use caution when starting out, the machine will jolt when the trigger levers are pulled.



FIG. 13

For best cleaning results allow the presprayed cleaning solution to penetrate into the carpet for approximately 10-12 minutes before scrubbing. Using only a shampoo carpet brush, operate the machine at a gradual, steady pace.

After scrubbing, while carpet is still wet, use an extractor or wet-vacuum to pick up suspended soil and foam. Then vacuum carpet when it's completely dry.

When done scrubbing perform the following machine maintenance procedures.

MACHINE MAINTENANCE

⚠ WARNING: Electrical hazard. Unplug Power Cord Before Cleaning or Servicing Machine

1. Remove and clean the brush after each use.
2. Clean the machine base after each use.
3. If equipped, rinse solution tank and solution supply hose with clear water.

4. Inspect power cord for damage after each use. If worn or damaged, replace cord immediately.
5. Wipe the power cord with damp cloth and neatly coil it around cord hook and handle after each use.
6. Periodically check that all bolts and nuts are tight.

FOR SAFETY: When servicing machine, all repairs must be performed by a qualified service person.

TRANSPORTING MACHINE

1. Unplug the power cord and remove the pad from the machine. Neatly coil the cord around the cord hook and handle to prevent cord damage.

FOR SAFETY: When transporting machine, remove optional weights from machine, if equipped.

2. Load the machine using a recommended loading ramp or carefully lift the machine with adequate assistance.

FOR SAFETY: When transporting machine, get assistance when lifting machine.

3. Secure machine with tie-down straps when transporting by vehicle.

STORING MACHINE

1. Remove pad driver/brush from machine and neatly coil cord around cord hook and handle (Figure 14)



FIG 14

2. Store machine in a dry area in the upright position.

⚠ WARNING: Electrical Shock Hazard. Do Not Use Outdoors. Do Not Expose to Rain. Store Indoors

TROUBLESHOOTING

PROBLEM	CAUSE	SOLUTION
Machine does not operate.	Faulty power cord.	Contact Service Center.
	Tripped circuit breaker.	Reset circuit breaker on machine.
	Tripped building circuit breaker.	Reset circuit breaker in building.
	Faulty machine wiring.	Contact Service Center.
	Faulty On/Off handle switch.	Contact Service Center.
	Faulty motor.	Contact Service Center.
	Capacitor burned out.	Contact Service Center.
Machine operates with a wobble or jerky motion.	Soiled Pad.	Replace Pad.
	Improper pad/brush for application.	Change to proper pad/brush.
	Pad driver/brush not installed correctly.	Remove and reinstall pad driver/brush.
	Pad/brush unevenly worn.	Replace pad/brush.
	Pad not properly centered on pad driver.	Remove and reinstall pad.
Machine circuit breaker trips continuously.	Heavily soiled pad/brush.	Clean or replace pad/brush.
	Improper pad/brush for application.	Change to proper pad/brush.
	Defective circuit breaker.	Contact Service Center.
	Worn carbon brushes in motor.	Contact Service Center.

SPECIFICATIONS

MODEL	F6
VOLTAGE / FREQUENCY	220 V / 50 Hz
RATED POWER	8 AMP
MACHINE DIMENSIONS	(Height x Width) 1194mm x 438mm
WEIGHT	53.5 Kg
MOTOR	1840 W
BRUSH SPEED	145 RPM
POWER CORD LENGTH	15 M
BRUSH / PAD DIAMETER	43 cm
VIBRATIONS AT CONTROLS	< 2.5 m/s ²
PROTECTION GRADE	IP43
SOUND PRESSURE LEVEL	< 70 dB(A)

Specifications subject to change without notice.

介绍

每种新型号都配备有这种手册，提供必要的操作和保养说明及替换零件信息。



在操作或维修前，请通读本手册并熟悉本机器。

预定用途

F6

洗地机适合商业用途，例如用于酒店、学校、医院、工厂、商店、办公室和租赁业务。本机设计用于擦洗室内地板，不适合任何其它用途。仅使用所推荐的百洁垫和适合机器用途的商售地板清洁剂。请勿将本机与易燃液体一起使用。

基本信息

本机将提供卓越的使用性能。然而，若在操作中注意以下事项，则能达到事半功倍的效果：

- 请在合理小心的情况下操作本机。
- 请按照所提供的保养说明定期保养本机。
- 请使用制造商供应或者同等的部件维修本机。



保护环境

请遵循所在地的废物处置说明以安全环保的方式处置包装材料和用过的机器部件。



请始终谨记回收利用。

机床资料卡

请在安装之时填写，以备将来参考使用。

型号： _____

序列号： _____

安装日期： _____

目录

重要安全说明	11
安全标签	12
机器零部件	13
机器总成	13
机器配置	13
机器操作	14
机器保养	16
机器运送	16
机器存放	16
故障排除	17
规格	17
零件清单	18
电路图	19
推荐的备件	20

坦能清洁系统设备（上海）有限公司

中国上海青浦漕盈路3777号1幢

邮编：201712

电话：86 21 6922 5333

传真：86 21 69225151

www.tennantco.com.cn

原来的指令。Copyright© 2012 Tennant Company,

版权所有。中国印刷。

规格和部件如有变更，恕不另行通知。

重要安全说明 – 请保存这些说明

所有操作员都必须阅读、理解并遵循下列安全措施。

在本手册当中，请按指示采用下列安全措施：



警告： 就可能导致严重人身伤害甚或死亡的危害或不安全的做法发出警告。

为确保安全：需明确安全操作设备必须采取的行为。

下列情况可能会对操作员或设备构成危险：



警告： 降低爆炸、火灾、电击或伤害危险的做法：

- 请勿使用易燃液体或者在易燃液体、易燃挥发气体或可燃粉尘附近进行操作。

本机并未装备防爆电机。在启动的时候及在操作期间，该电机都会产生火花；这样，如果本机运行所在的区域存在有易燃挥发气体/液体或可燃粉尘，就可能造成闪火或爆炸。

- 如果电源线受损，请勿运行本机。请勿变更插头。在清洁或者维修机器之前，请先拔下电源插头。

如果供应的电源线受损或者断裂，必须由制造商或其维修代理商或者具备类似资质的人员进行更换，以免发生危险。

- 请勿在户外使用。请勿淋雨。应室内存放。

为确保安全：

1. 下列情况禁止操作本机：

- 未受过培训并得到授权。
- 未阅读并理解操作员手册。
- 在智力上或身体上不能遵循本机的使用说明。
- 电源线未正确接地。
- 电源电压与本机标牌所示的电压不一致。
- 电源线或插头已损坏。
- 未处于正确操作条件时。
- 在户外区域。本机仅供室内使用。
- 在水中。
- 使用延长电源线时。
- 使用非坦能公司 (Tennant) 供应或认可的洗地刷或者配件。

2. 在启动本机之前：

- 请先确保所有安全装置到位并正确运行。
- 定期检查电源线是否有受损或老化的迹象。
- 取走地面上的松散物体，以免被百洁垫在旋转时弹射，发生危险。
- 请遵循湿滑地板相关的安全指南。
- 请遵循关于化学容器的混合和处理说明。
- 请穿防滑鞋。

3. 在操作本机之时：

- 仅按照本手册所述的那样使用机器。
- 保持百洁垫清洁。
- 禁止通过电源线或插头拖拽机器。
- 机器运行时不得压住电源线。
- 请避免电源线与百洁刷接触。
- 禁止在锋利边缘或拐角处拉动电源线。
- 关门时请勿挤住电源线。
- 禁止通过拉动电源线来拔掉插头。
- 禁止拉紧电源线。
- 禁止用湿手接触插头。
- 电源线应远离发热表面。
- 手柄处于垂直位置时，不得接通电源。
- 请勿释放手柄，直至百洁垫完全停住为止。
- 在斜坡和光滑表面上请缓行。
- 立即报告机器损坏或者不正常的运转。
- 请儿童和未授权人员远离机器。
- 不得用作玩具。
- 如果加重铁安装在机器上时，请不要将机器向后轮倾斜。
- 请不要使用超过两块重铁

4. 在离开本机之前：

- 关闭机器。
- 从墙壁插座上拔下电源线的插头。

5. 在维修本机之时：

- 从墙壁插座上拔下电源线的插头。
- 避免移动部件。不要穿戴宽松的衣物或珠宝首饰。
- 请使用制造商供应或认可的替换零件。
- 所有维修都必须由具备资质的维修人员进行。
- 禁止改变机器的原始设计。

6. 在运送本机之时：

- 从墙壁插座上拔下电源线的插头。
- 抬起机器时应寻求帮助。
- 请使用紧固带将机器固定到卡车或拖车上。
- 请取下本机的备用压载物（如果配备的话）。

安全标签

安全标签出现在机器上的指定位置。如果标签丢失、受损或模糊不清，则应更换。



警告标签 ——
位于机器手柄背面。



机器零部件



1. 电源开关扳机杆
2. 手柄高度调节杆
3. 安全锁定按钮
4. 断路器复位按钮
5. 电源线挂钩
6. 15 米电源线
7. 电机
8. 移动轮
9. 刷头座
10. 防撞轮
11. 压载物挂架

机器总成

连接手柄(图 1)

1. 将手柄插入本机，并在手柄的每侧放上衬垫。
2. 插入铰轴，滚花端（轴的粗糙部分）朝外。使用木槌使铰轴滑动穿过衬垫和手柄。敲打铰轴，直至同电机底盘齐平为止。
3. 松开手柄调节杆上的蝶形螺母，并确保凸轮垫圈与槽缝对齐。将手柄调节杆总成插入开槽支架之中。使手柄调节杆总成滑过固定夹和支架。将垫圈放在攻纹螺栓上，拧紧蝶形螺母。

4. 将电源线缠绕在手柄基座上。插上电源线插头，再滑动保护盖归位。

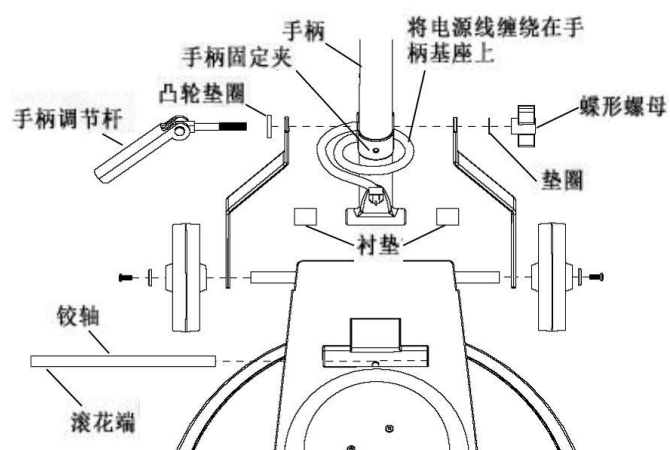


图1

机器配置

安装针座/百洁垫/洗地刷

为确保安全：在维修本机之前，请先从墙壁插座上拔掉电源插头。

5. 手柄处于垂直位置时，小心向后倾斜本机，使手柄躺倒在地上。

注意：欲知百洁垫和洗地刷建议，请向授权的分销商咨询。只能使用制造商供应或认可的针座和洗地刷。

6. 将针座/洗地刷装到传动电机的轮毂上，然后逆时针转动至啮合(图 2)。



图2

为了安全：如果加重铁安装在机器上时，请不要将机器向后轮倾斜。

7. 如果使用百洁垫，请将百洁垫放到针座上(图 3)。



图3

8. 将本机恢复垂直站立。

安装压载物 - 备用

为了增加百洁垫的压力，坦能公司提供有 11.7 公斤重的 U 形压载物，可按下述步骤添挂到本机上。

压载物仅适用于坚硬的地板表面，例如大理石、石块、水磨石和水泥地面。压载物不适合用于地毯清洁。

根据所需的垫压数值，最多可以添挂两个压载物。

为了安全：在操作机器时，不要使用超过两块以上重铁

1. 每种压载物，一次一个，排列至挂载点。(图 4)

2. 确保压载物挂载点联锁。

(图 4a)



图4

机器操作

为确保安全：除非已阅读并理解了操作员手册，否则不得操作本机。



警告：请勿使用易燃液体或者在易燃液体、易燃挥发气体或可燃粉尘附近进行操作。

操作本机

1. 将电源线插头插入已接地的墙壁插座。
为确保安全：如果电源线或者插头受损，请勿操作本机。请勿使用延长电源线操作本机。

2. 为了调节手柄，先用脚向上抬起手柄高度调节杆(图 5)。然后再将手柄调节至舒适的操作位置(图 6)。将调节杆向下踩紧，从而锁定手柄(图 7)。



图5



图6

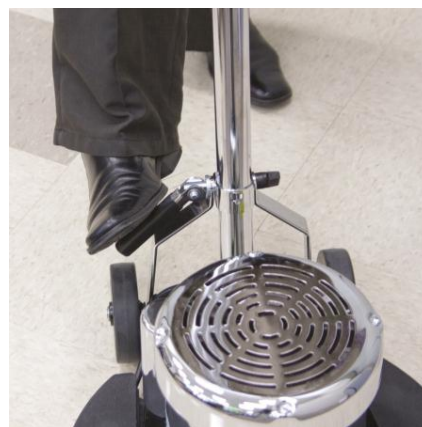


图7

3. 启动本机之前，握住手柄，使本机底座与地面平行，这样能减少机器启动时的突发晃动。

注意：对于首次使用的用户，请使用较软的抛光百洁垫。

为了安全：如果加重铁安装在机器上时，请不要将机器向后轮倾斜。

4. 开始擦洗时，请握稳手柄，下压安全锁定按钮，再拉住扳机杆（图 8）。机器启动之后，即松开安全锁定按钮。

请注意：在启动机器时，请谨慎，因为在拉住扳机杆时，本机会出现晃动。

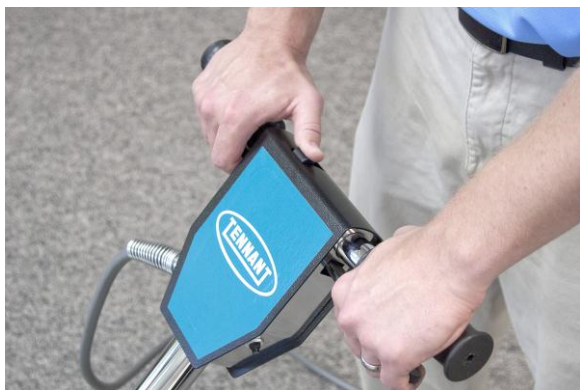


图8

5. 若要本机向左移动（图9），略微压低手柄。若要本机向右移动（图 10），略微抬高手柄。请以左右运动的方式操作本机。



图9



图 10

注意：当百洁垫变脏时，请取下百洁垫，并翻转使用其干净的一面。在两面都变脏之后，请将百洁垫取下进行清洗。

6. 若要停机，请松开扳机杆，直至本机完全停住为止。安全锁定按钮将自动闭合。

为确保安全：在使用本机时，请勿释放手柄，直至百洁垫完全停住为止。

注意：本机的断路器可能会在过载时跳闸。更换为较软的百洁垫/洗地刷，并定期检查百洁垫是否有污物积存。若要复位断路器开关，请等候 15 秒，然后再按手柄上的复位按钮。

7. 请勿在同一点位长时段地运转本机。地面可能会发生损坏。

8. 若要越过门槛和梯级，请停下本机，向后倾斜本机，使移动轮承重。

9. 在不使用本机的情况下，请勿将本机长留置于百洁垫/洗地刷之上。百洁垫/洗地刷可能会受损。

10. 当洗完地时，请进行下列机器保养步骤。

操作清水箱选配件。

1. 用推荐的清洁剂注入清水箱（图 11）。

警告：请勿使用易燃液体。

为确保安全：在操作本机之前，请遵循关于化学容器的混合和处理说明。



图11

2. 将手柄压低至工作位置。扭动水量控制旋钮，使清洁剂分散到洗地刷上。（图 12）。



图12

清洁地毯

清洗地毯要求使用 Shampoo

地毯清洗刷。请勿使用只适合于硬地面的洗地刷；否则会造成人身伤害和地毯损坏。欲知百洁垫建议，请向您的分销商或经销商咨询。

备选机器压载物不适合用于地毯清洁。

在地毯上操作本机之前，必须先用获准的清洁剂对地毯进行预喷淋（图

13）。这种清洁剂还能充当润滑剂的作用，以便降低 shampoo 清洗刷转动的阻力。

请注意：在启动机器时，请谨慎，因为在拉住扳机杆时，本机会出现晃动。



图13

若要取得最佳清洁效果，先使预喷淋的清洁剂渗入地毯大约 10-12 分钟，然后再行擦洗。务必使用 shampoo 地毯清洗刷，且应平缓稳定地操作本机。

清洗后，在地毯仍潮湿时，使用抽气机或湿式真空吸尘器回收悬浮在地毯上的污垢和泡沫。然后在地毯完全变干时，使用真空吸尘器吸尘。。

当擦完地时，请进行下列机器保养步骤。

机器保养

⚠ 警告：电气危害。在清洁或者维修机器之前，请先拔下电源线插头。

1. 在每次使用之后，取下洗地刷进行清洁。
2. 在每次使用之后须清洁机器底座。
3. 使用清水冲洗清水箱和清水软管（若选配）。

4. 在每次使用之后，检查电源软线是否有损坏。如果有磨破或损坏的情况，请立即更换电源线。

5. 在每次使用之后，用湿布擦拭电源线，再将电源线整齐地盘绕在挂钩和手柄上。

6. 定期检查所有螺栓和螺母是否拧紧。

为确保安全：在维修机器时，所有维修都必须由具备资质的维修人员进行。

机器运送

1. 拔掉电源线插头，并取下机器的百洁垫。将电源线整齐地盘绕在挂钩和手柄上，以防电源线受损。

为确保安全：在运送本机时，请取下本机的备用压载物（如果配备的话）。

2. 用推荐的装载坡台装载机器或在别人的帮助下小心抬起机器。

为确保安全：若要运送本机，在抬起本机时，请寻求帮助。

3. 通过车辆运送时，请使用紧固带固定机器。

机器存放

1. 从机器上取下针座/洗地刷，将电源线整齐地盘绕在挂钩和手柄上（图 14）



图 14

2. 在干燥区域垂直放置机器。

**⚠ 警告：电击危害。
请勿在室外使用。请勿淋雨。应室内存放**

故障排除

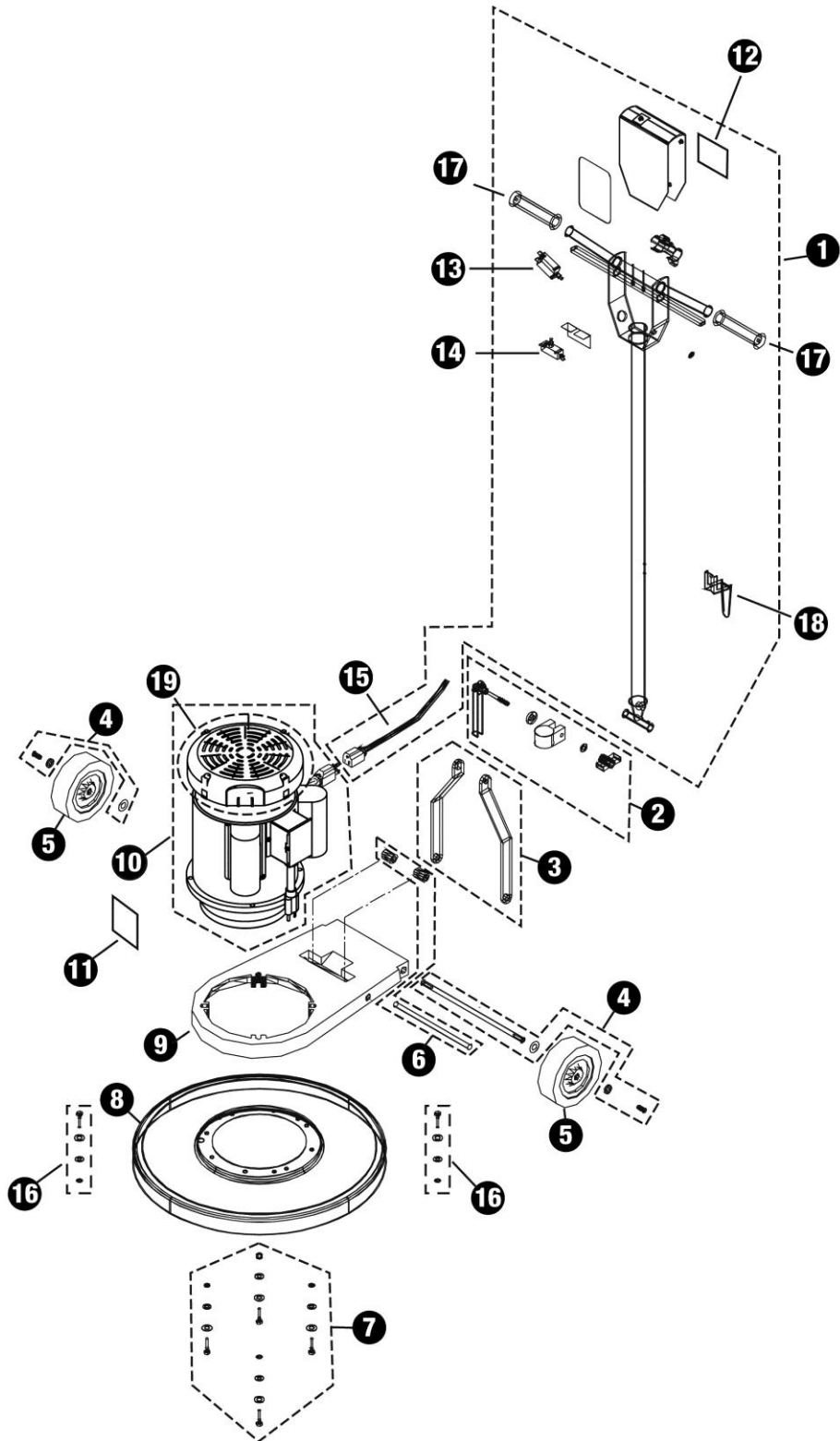
问题	起因	解决方案
机器不能运转。	电源线有问题。	请与维修中心联系。
	断路器跳闸。	复位机器上的断路器。
	大楼的断路器跳闸。	复位大楼内的断路器。
	机器布线有问题。	请与维修中心联系。
	手柄开关故障。	请与维修中心联系。
	电机故障。	请与维修中心联系。
	电容器烧坏。	请与维修中心联系。
机器运转时晃动或不平稳。	百洁垫已变脏。	更换百洁垫。
	使用了不合适的百洁垫/洗地刷。	更换合适的百洁垫/洗地刷。
	针座/洗地刷未正确安装。	取下针座/洗地刷重新安装。
	百洁垫/洗地刷不均匀磨损。	更换百洁垫/洗地刷。
	百洁垫未在针座的中心。	取下百洁垫重新安装。
机器断路器连续跳闸。	百洁垫/洗地刷肮脏无比。	清洁或者更换百洁垫/洗地刷。
	使用了不合适的百洁垫/洗地刷。	更换合适的百洁垫/洗地刷。
	断路器缺陷。	请与维修中心联系。
	电机碳刷磨损。	请与维修中心联系。

规格

型号	F6
电压/频率	220 伏 / 50 赫兹
额定功率	8 AMP
机器尺寸	(高 x 宽) 1194 毫米 x 438 毫米
重量	53.5 公斤
电机	1840 瓦
刷速	145 转/分钟
电源线长度	15 米
刷子/百洁垫直径	43 厘米
受控振动	< 2.5 m/s ²
保护级别	IP43
声压级	<70 dB(A)

规格可能会有变动，恕不另行通知。

F6 PARTS LIST



F6 PARTS LIST

Ref.	Part No.	Description	Qty.
1	9009686	HANDLE ASSY, [F6, CN] (includes 5x 10-24 X 1/2 screws)	1
2	9009687	CLAMP ASSY, HANDLE [F6, CN] (includes 1x 1/4" X 3/4" dowel pin, 1x 1/4 nut, 1x washer, 1x single wave washer)	1
3	9009688	BRACKET KIT, HANDLE [F6, CN] (includes 1x washer, 1x 1/4" X 3/4" dowel pin, 1x single wave washer)	1
4	9009689	AXLE KIT [F6, CN] (includes 2x 1/4-20 X 3/4 screws, 2x washers, 4x 1"OD X 1/2"ID washer spring, 2x retaining rings)	1
5	9009690	WHEEL ASSY [F6, CN] (includes 2 wheels, 2x 1"OD X 1/2"ID washer spring, 3x 10-32 X 3/4" screws)	1
6	9009691	PIN ASSY, PIVOT [F6, CN] (includes 2 spacers)	1
7	9009692	HDWR KIT, MOTOR, MTG [F6, CN] (includes 6x1/4 Washer, 4x 5/16 washer, 4x 3/8 washer, 4x 1/4-20 X 1-3/4 screws)	1
8	9009693	COVER, BRUSH [F6, CN]	1
9	9009694	HOUSING [F6, CN]	1
10	9009695	MOTOR, ELE, 230VAC, 2.00HP [F6, CN]	1
11	1071203	LABEL, MODEL [TENNANT F6]	1
12	1071205	LABEL, HANDLE [F6, CN] LABEL, WARNING, FLOOR MACHINE [EN/CN]	1
13	9009698	CIRCUITBREAKER, 10AMP [F6, CN]	1
14	9009699	SWITCH, 25A, SP, MOM [F6, CN]	1
15	9009700	CORD, POWER, BLK [F6, CN]	1
16	9009702	HDWR KIT, WEIGHT, MTG [F6, CN]	1
17	9010092	GRIP, HANDLE, 1.0D, BLK [F6, CN]	2
18	9010093	HOOK, CORD [F6, CN]	1
19	9010094	COVER, MOTOR [F6, CN]	1
N/A	9009701	WEIGHT [F6, CN]	1
N/A	9009703	TANK, SOLUTION [F6, CN] OPTIONAL	1
N/A	9009704	BRUSH, 43 cm [F6, CN]	1
N/A	9009705	DRIVER, PAD, 43cm [F6, CN]	1

F6 RECOMMENDED SPARE PARTS

Ref.	Part No.	Description
2	9009687	CLAMP ASSY, HANDLE [F6, CN]
4	9009689	AXLE KIT [F6, CN]
5	9009690	WHEEL ASSY [F6, CN]
10	9009695	MOTOR, ELE, 230VAC, 2.00HP [F6, CN]
13	9009698	CIRCUITBREAKER, 10AMP [F6, CN]
14	9009699	SWITCH, 25A, SP, MOM [F6, CN]
15	9009700	CORD, POWER, BLK [F6, CN]
17	9010092	GRIP, HANDLE, 1.0D, BLK [F6, CN]
18	9010093	HOOK, CORD [F6, CN]
19	9010094	COVER, MOTOR [F6, CN]
N/A	9009701	WEIGHT [F6, CN]
N/A	9009703	TANK, SOLUTION [F6, CN] OPTIONAL
N/A	9009704	BRUSH, 43cm [F6, CN]
N/A	9009705	DRIVER, PAD, 43cm [F6, CN]

ELECTRICAL DIAGRAM

